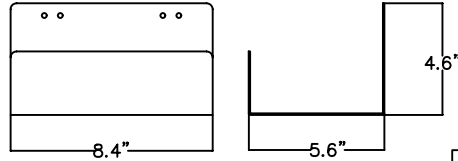


THE INFORMATION CONTAINED HEREON IS PROPRIETARY AND CONFIDENTIAL TO DYNACOM CORPORATION. AND SHALL NOT BE USED OR DISCLOSED, IN WHOLE OR IN PART WITHOUT FIRST OBTAINING THE WRITTEN PERMISSION OF DYNACOM CORPORATION.

| ZONE | REV. | DESCRIPTION | DATE | APRV. |
|------|------|-----------------|----------|-------|
| - | A | INITIAL RELEASE | 11/25/08 | E.A. |

NOTES:

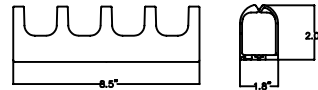
1. DYNACOM IMPACT TOOL HANDLE# 788J1TO BE USED WITH CAT 6 4-PAIR REPLACEMENT HEAD# 788JH16 FOR ALL CAT 6 WIRE IMPACT TERMINATIONS.



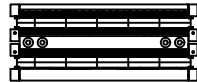
Tower Shelf P/N: T-Shelf



4-Pair Connector

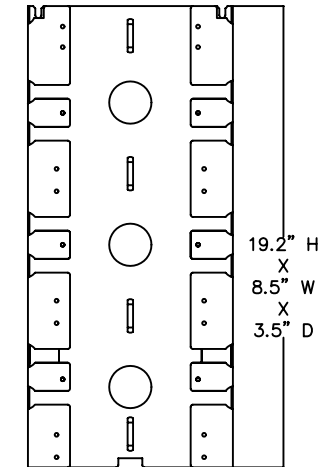


Trough Cable w/o Legs



Cat 6 110 Wiring Block, 96 Pair w/o Legs

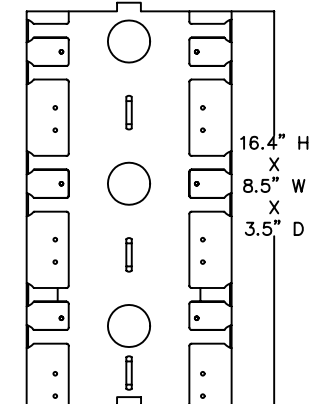
| 610WMT-288, Cat 6 110 High Density Cross-Connect System | | |
|---|-------------|--|
| Qty | Part Number | Description |
| 1 | T-300WMT | Tower |
| 1 | T-SHELF | Tower Shelf |
| 3 | 610WB-96 | Cat 6 110 Wiring Block, 96 Pair w/o Legs |
| 3 | 110B1 | Trough Cable w/o Legs |
| 72 | 610C-4 | Cat 6 4-Pair Connector |
| 6 | 110PH | Holder ID Plastic Clear |
| 6 | 110PS | Strip ID Paper White |
| 6 | - | Screw, 6-32 Pan Ph Hd x 1/2 lg Zinc Pl |
| 8 | - | Screw, 6-32 Pan Ph Hd x 1/4 lg Zinc Pl |
| 14 | - | Kep Nut, 6-32 Hex Zinc Plate |



Tower, P/N: T-300WMT

| 610WMT-864, Cat 6 110 High Density Cross-Connect System | | |
|---|-------------|--|
| Qty | Part Number | Description |
| 1 | T-300WMT | Tower |
| 2 | T-300TWR | Tower Modular |
| 1 | T-SHELF | Tower Shelf |
| 9 | 610WB-96 | Cat 6 110 Wiring Block, 96 Pair w/o Legs |
| 9 | 110B1 | Trough Cable w/o Legs |
| 216 | 610C-4 | Cat 6 4-Pair Connector |
| 18 | 110PH | Holder ID Plastic Clear |
| 18 | 110PS | Strip ID Paper White |
| 18 | - | Screw, 6-32 Pan Ph Hd x 1/2 lg Zinc Pl |
| 20 | - | Screw, 6-32 Pan Ph Hd x 1/4 lg Zinc Pl |
| 38 | - | Kep Nut, 6-32 Hex Zinc Plate |

| 610WMT-576, Cat 6 110 High Density Cross-Connect System | | |
|---|-------------|--|
| Qty | Part Number | Description |
| 1 | T-300WMT | Tower |
| 1 | T-300TWR | Tower Modular |
| 1 | T-SHELF | Tower Shelf |
| 6 | 610WB-96 | Cat 6 110 Wiring Block, 96 Pair w/o Legs |
| 6 | 110B1 | Trough Cable w/o Legs |
| 144 | 610C-4 | Cat 6 4-Pair Connector |
| 12 | 110PH | Holder ID Plastic Clear |
| 12 | 110PS | Strip ID Paper White |
| 12 | - | Screw, 6-32 Pan Ph Hd x 1/2 lg Zinc Pl |
| 14 | - | Screw, 6-32 Pan Ph Hd x 1/4 lg Zinc Pl |
| 26 | - | Kep Nut, 6-32 Hex Zinc Plate |



Tower Modular, P/N: T-300TWR



e-mail.....info@dynacomcorp.com

1366 San Mateo Ave Suite 201
South San Francisco CA 94080

TOLS. .X=+/- 0.030, .XX=+/- 0.010, .XXX=+/- .005, ANGLES=+/-0.5 DEG.

| | | |
|---|------------------------|-----------------------|
| NEXT ASSY: - | DRAWN: E.A. 04/07/2005 | CHECKED: - |
| Hardware Data Chart-Cat 6 110 High Density Cross-Connect System | | DWG. NO. SHEET 1 OF 1 |
| | | 610WMT-864FT |
| | | REV. A |

