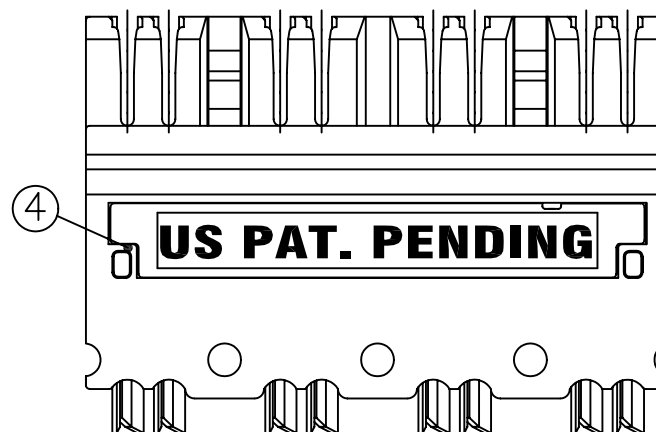
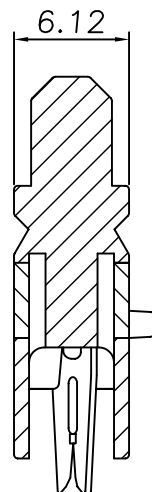
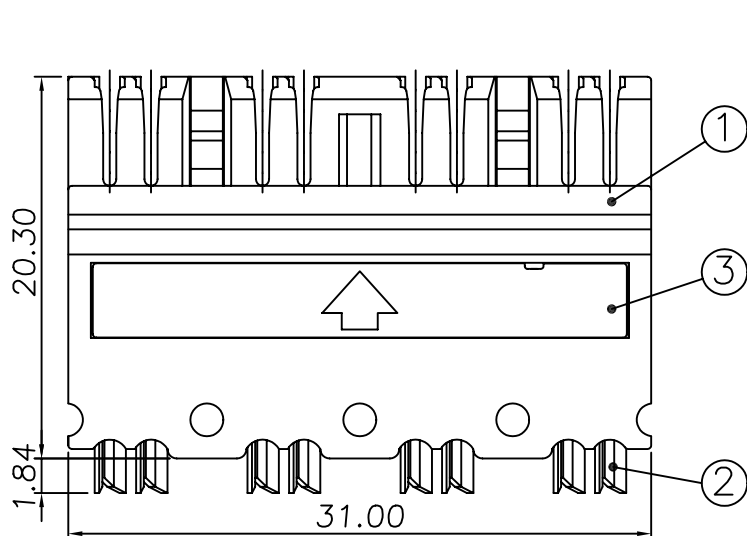
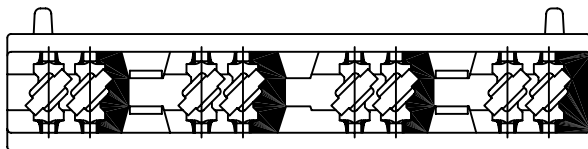


THE INFORMATION CONTAINED HEREON IS PROPRIETARY AND CONFIDENTIAL TO DYNACOM CORPORATION. AND SHALL NOT BE USED OR DISCLOSED, IN WHOLE OR IN PART WITHOUT FIRST OBTAINING THE WRITTEN PERMISSION OF DYNACOM CORPORATION.

ZONE	REV	DESCRIPTION	DATE	APPV.
-	A	INITIAL RELEASE	12/03/08	E.A.

NOTES:



Environmental Conditions
 TEMPERATURE RANGE
 STORAGE -40 to +70°C
 OPERATIONAL -10 to +60°C
 RELATIVE HUMIDITY (OPERATIONAL)
 MAXIMUM NONCONDENSING 93%

PHYSICAL:
 HOUSING: PC UL94V-0
 IDC TERMINAL MATERIAL:
 Phosphor Bronze alloy plated with 100 micro-inch Sn.
 Planted with 100% Tin.Mist

ELECTRICAL:
 ELECTRICAL INSULATION RESISTANCE:10 MEGAOHMS MIN.
 DIELECTRIC WITHSTANDING VOLTAGE:1,000
 VOLTS,RMS,60HZ,1 MIN.
 CONTACT RESISTANCE:20 MILLIOHMS MAX.
 CURRENT RATING:1.5 AMPS AT 20°C

4	TERMINAL INSERT B	1	P1656(LP1748A)
3	TERMINAL INSERT A	1	P1656(LP1748)
2	IDC TERMINAL	8	M0833(LT0400)
1	TERMIANL HOUSING	1	P1648(LP1747)
No#	Description	Q'TY	Dwg No#(P/N)



e-mail.....info@dynacomcorp.com

31082 San Antonio Street
 Hayward, CA 94544

TOLS. .X=+/- 0.030, .XX=+/- 0.010, .XXX=+/-0.005, ANGLES=+/-0.5 DEG.

NEXT ASSY: -	DRAWN: E.A. 12/03/08	CHECKED: Joe Tornello
TITLE: Connecting Clip, 110 Cat6, 4 pair	DWG. NO. 610C-4	SHEET 1 OF 1 REV. A

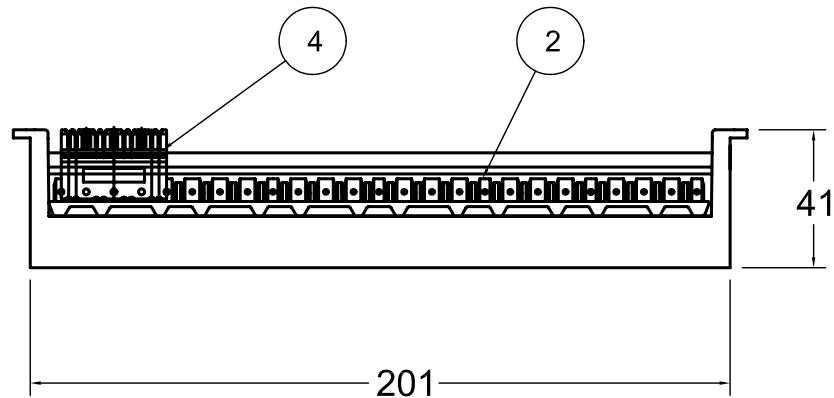
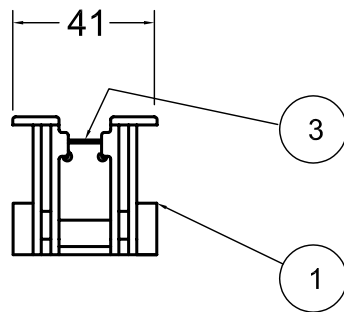
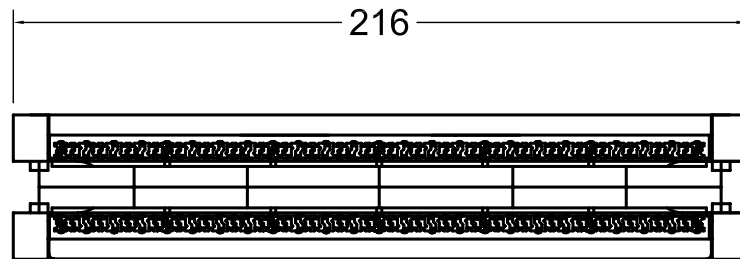
THE INFORMATION CONTAINED HEREON IS PROPRIETARY AND CONFIDENTIAL TO DYNACOM CORPORATION. AND SHALL NOT BE USED OR DISCLOSED, IN WHOLE OR IN PART WITHOUT FIRST OBTAINING THE WRITTEN PERMISSION OF DYNACOM CORPORATION.

ZONE	REF	DESCRIPTION	DATE	APPV.
-	A	INITIAL RELEASE	07/16/07	E.A.

NOTES:

1. MATERIAL: P.C.
2. PART TO BE FREE OF BURRS, SUCKS & SCRATCHES.
3. DRAFT ANGLE: 1° MAX.
4. ALL UNSPECIFIED CORNER, EDGE, OR FILLET BREAKS ARE TO BE 0.50mm MAXIMUM.

ITEM	DESCRIPTION	QTY	P/N
1	48 PR BASE	1	LP1340
2	24 PR INSERT	2	LP1019
3	INDEX HOLDER	2	110PH
4	110-CAT6 CONNECTING CLIP	24	610C-4



e-mail.....sales@dynacomcorp.com
 31082 San Antonio Street
 Hayward, CA 94544

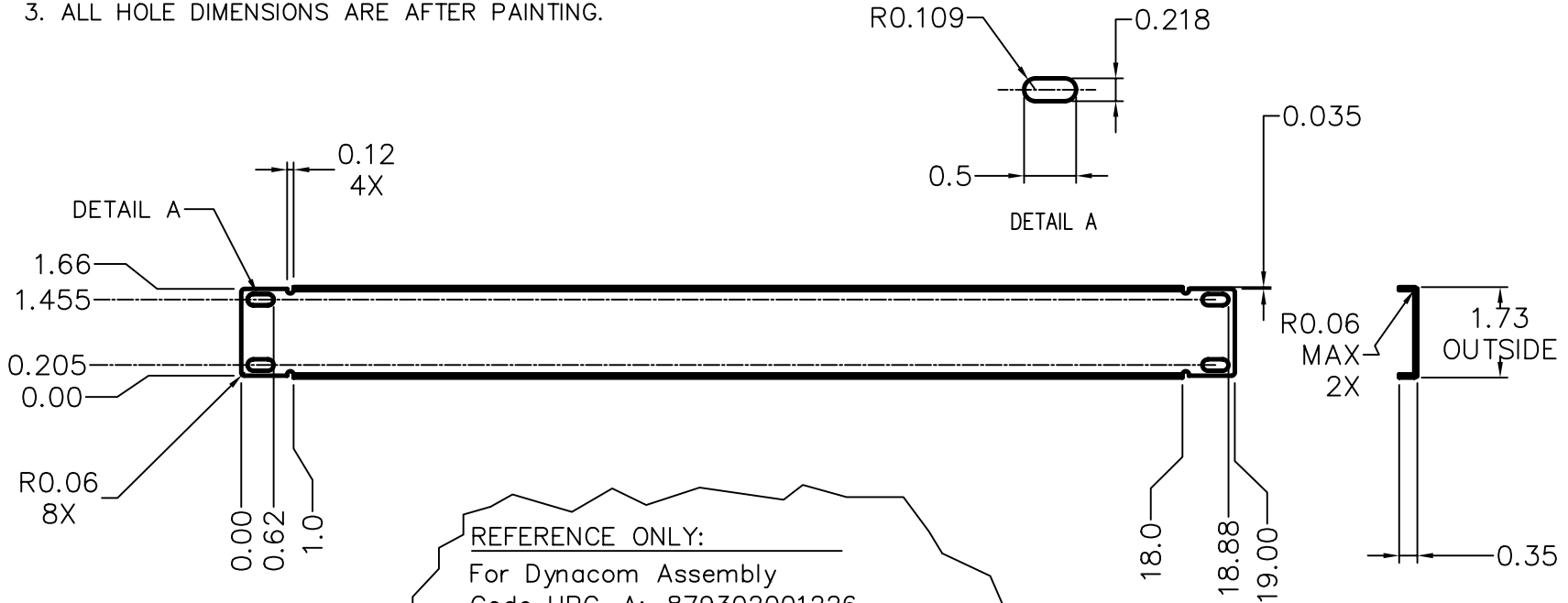
TOLS: -			
NEXT ASSY: -	DRAWN: E.A. 01/15/08	CHECKED: Pete Bach	
TITLE: 48 Pair Cat6 Wiring Block		DWG. NO. 610WB-48	REV. A

THE INFORMATION CONTAINED HEREON IS PROPRIETARY AND CONFIDENTIAL TO DYNACOM CORPORATION. AND SHALL NOT BE USED OR DISCLOSED, IN WHOLE OR IN PART WITHOUT FIRST OBTAINING THE WRITTEN PERMISSION OF DYNACOM CORPORATION.

ZONE	REV.	DESCRIPTION	DATE	APPV.
-	A	INITIAL RELEASE	07/06/05	E.A.

NOTES:

1. MATERIAL: 16 GA. (0.060) COLD ROLLED STEEL.
2. FINISH: BLACK, SEMI GLOSS, MED TEXTURE POWDER COAT.
3. ALL HOLE DIMENSIONS ARE AFTER PAINTING.



REFERENCE ONLY:

For Dynacom Assembly
Code UPC-A: 879302001226
Attach Adhesive Label to Plastic Bag

P/N: 2016-RR100B

Blank Panel 1U 1.75"

Quantity: 1



e-mail.....info@dynacomcorp.com

1366 San Mateo Ave Suite 201
South San Francisco CA 94080

TOLS. .X=+/- 0.030, .XX=+/- 0.010, .XXX=+/- .005, ANGLES=+/-0.5 DEG.

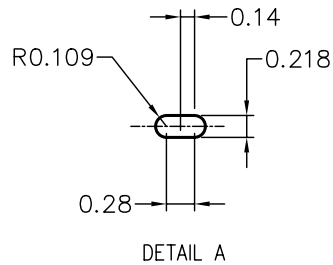
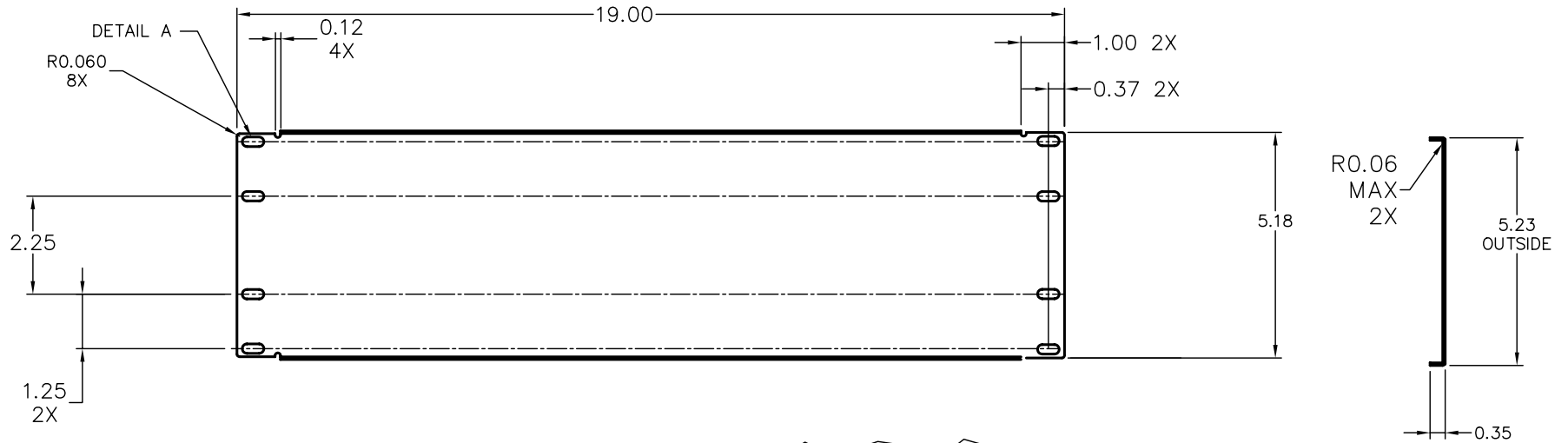
NEXT ASSY: -	DRAWN: E.A. 07/06/05	CHECKED: Eddy Lee
TITLE: Blank Panel 1U 1.75"		REV. A
DWG. NO. 2016-RR100B		

THE INFORMATION CONTAINED HEREON IS PROPRIETARY AND CONFIDENTIAL TO DYNACOM CORPORATION. AND SHALL NOT BE USED OR DISCLOSED, IN WHOLE OR IN PART WITHOUT FIRST OBTAINING THE WRITTEN PERMISSION OF DYNACOM CORPORATION.

ZONE	REV.	DESCRIPTION	DATE	APPV.
-	A	INITIAL RELEASE	07/06/05	E.A.

NOTES:

1. MATERIAL: 16 GA. (0.060) COLD ROLLED STEEL.
2. FINISH: BLACK, SEMI GLOSS, MED TEXTURE POWDER COAT.
3. ALL HOLE DIMENSIONS ARE AFTER PAINTING.



REFERENCE ONLY:
 For Dynacom Assembly
 Code UPC-A: 879302001240
 Attach Adhesive Label to Plastic Bag

P/N: 2016-RR300B
 Blank Panel 3U 5.25"
 Quantity: 1

8 7 9 3 0 2 0 0 1 2 4 0



e-mail.....info@dynacomcorp.com
 1366 San Mateo Ave Suite 201
 South San Francisco CA 94080

TOLS. .X=+/- 0.030, .XX=+/- 0.010, .XXX=+/- .005, ANGLES=+/-0.5 DEG.			
NEXT ASSY: -	DRAWN: E.A. 07/06/05	CHECKED: Eddy Lee	
TITLE: Blank Panel 3U 5.25"		DWG. NO. 2016-RR300B	SHEET 1 OF 1 REV. A