

THE INFORMATION CONTAINED HEREON IS PROPRIETARY AND CONFIDENTIAL TO DYNACOM CORPORATION, AND SHALL NOT BE USED OR DISCLOSED, IN WHOLE OR IN PART, WITHOUT FIRST OBTAINING THE WRITTEN PERMISSION FROM DYNACOM CORPORATION.

ZONE	REV	DESCRIPTION	DATE	APPV.
-	A	RELEASED.	03/23/07	E.A.

### TRANSMISSION PERFORMANCE

MEET ALL CATEGORY 5E CONNECTING HARDWARE PERFORMANCE REQUIRMENTS SPECIFIED IN TIA/EIA-568-B.2

### ENVIRONMENTAL CONDITIONS

TEMPERATURE RANGE  
 STORAGE -40 to +70 □  
 OPERATIONAL -10 to +60 □  
 RELATIVE HUMIDITY (OPERATIONAL)  
 MAXIMUM NONCONDEDSING 93%

### ELECTRICAL

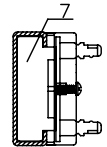
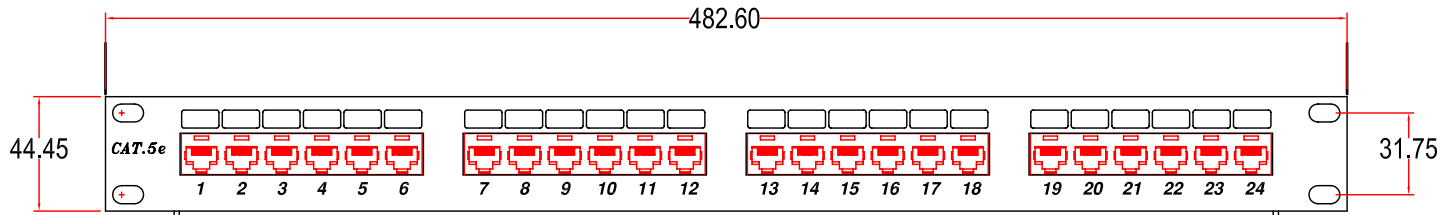
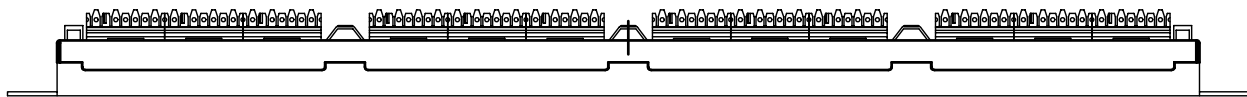
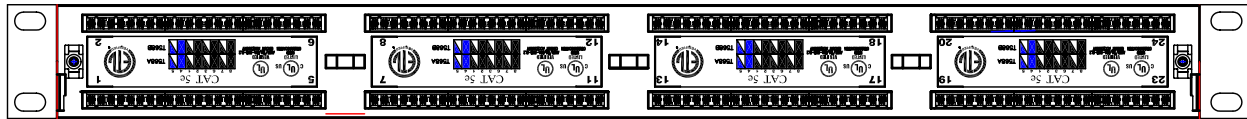
ELECTRICAL INSULATION RESISTANCE: 10 MEGAOHMS MIN.  
 DIELECTRIC WITHSTANDING VOLTAGE : 1,000 VOLTS, RMS, 60HZ, 1 MIN  
 CONTACT RESISTANCE : 20 MILLIOHMS MAX  
 CURRENT RATING: 1.5 AMPS AT 20 □

### MECHANICAL

TOTAL MATING FORCE : 800 GRAMS FOR A 8 WIRE LEADS MINIMUM  
 RETENTION : 30 LBS MIN BETWEEN THE JACK AND PLUG  
 INSERTION/EXTRACTION LIFE : 750 CYCLES MINIMUM  
 NUMBER OF IDC TERMINATIONS :200 MINIMUM

### PHYSICAL

HOUSING : HIGH-MIPACT, FLAME-PETARDANT PLASTIC, UL94V-0 RATED  
 SPRING WIRE / CONTACT BLADES  
 MATERIAL : PHOSPHOR BERONZE ALLOY  
 PLATEING : 24 KARAT HARD GLOD (50 MICRO INCH PLATING THICKNESS) OVER 100 MICRO INCH NICKEL  
 PLATE : SPCC-SD 16G

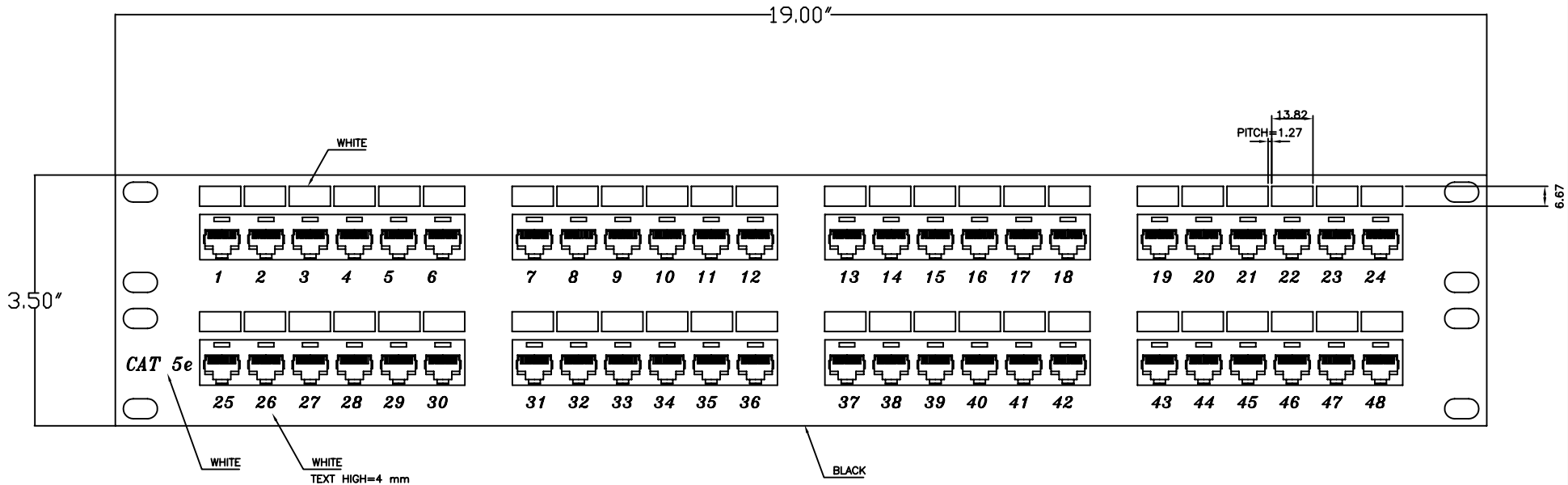


e-mail.....info@dynacomcorp.com  
 1366 San Mateo Ave Suite 201  
 South San Francisco CA 94080

Dimensions: mm - DO NOT SCALE DRAWING			
NEXT ASSY-	DRAWN: Letetia	CHECKED: E.A.	
TITLE: Cat5E 24-Port Rack-Mount Patch Panel 1RU (568 A/B)		DWG. NO. 2013-24C5E	SHEET 1 OF 1 REV. A

THE INFORMATION CONTAINED HEREON IS PROPRIETARY AND CONFIDENTIAL TO DYNACOM CORPORATION AND SHALL NOT BE USED OR DISCLOSED, IN WHOLE OR IN PART WITHOUT FIRST OBTAINING THE WRITTEN PERMISSION OF DYNACOM CORPORATION. SPECIFICATIONS ARE SUBJECT TO CHANGE WITHOUT NOTICE.

ZONE		REV	DESCRIPTION	DATE	APPROVED

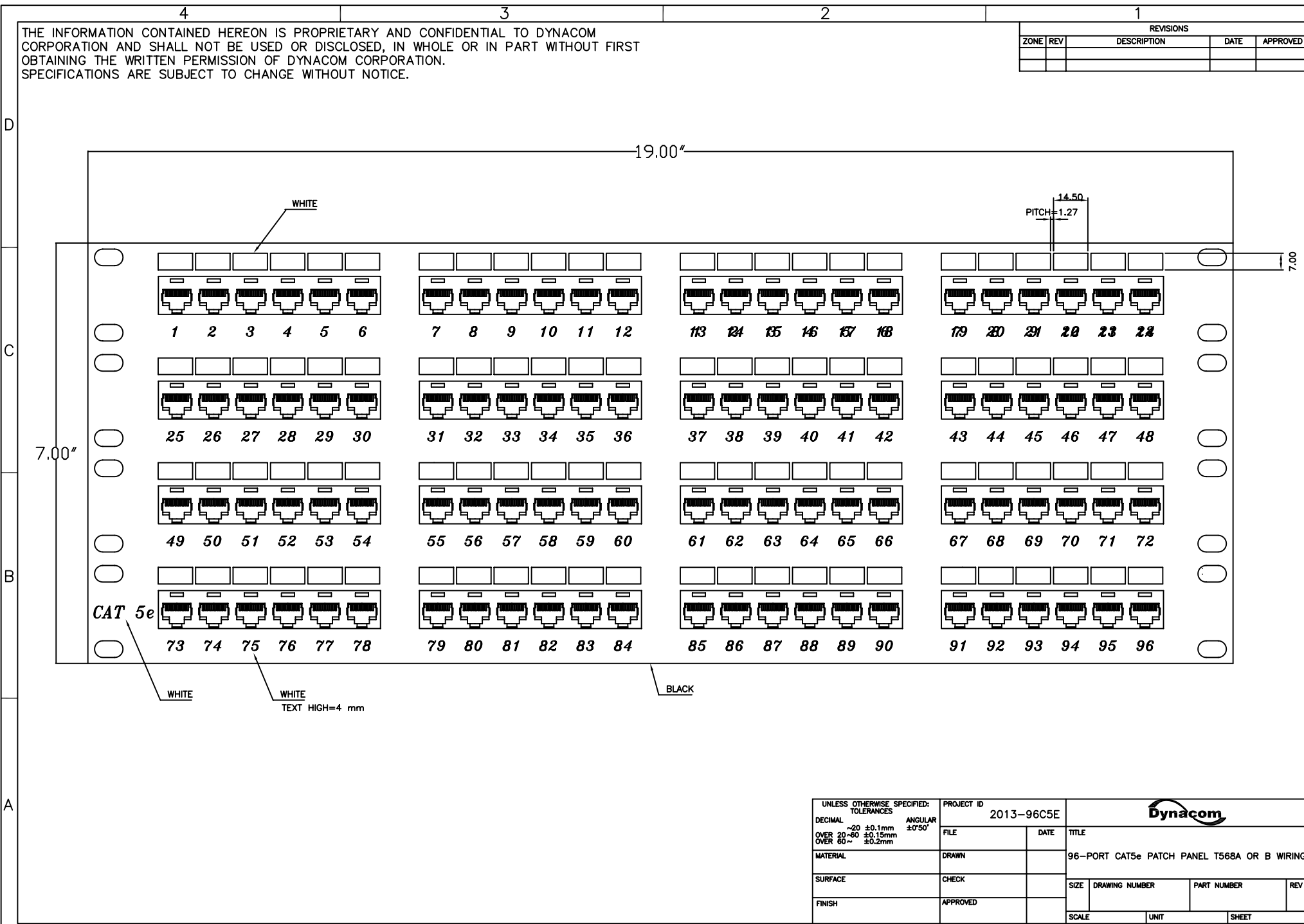


UNLESS OTHERWISE SPECIFIED: TOLERANCES	DECIMAL	~20 ±0.1mm	ANGULAR	±0°50'	PROJECT ID	2013-48C5E				
	OVER 20-60	±0.15mm	OVER 60~	±0.2mm	FILE	DATE	TITLE			
MATERIAL	DRAWN				48-PORT CAT5e PATCH PANEL T568A OR B WIRING					
SURFACE	CHECK				SIZE	DRAWING NUMBER	PART NUMBER	REV		
FINISH	APPROVED				SCALE	UNIT	SHEET			



THE INFORMATION CONTAINED HEREON IS PROPRIETARY AND CONFIDENTIAL TO DYNACOM CORPORATION AND SHALL NOT BE USED OR DISCLOSED, IN WHOLE OR IN PART WITHOUT FIRST OBTAINING THE WRITTEN PERMISSION OF DYNACOM CORPORATION. SPECIFICATIONS ARE SUBJECT TO CHANGE WITHOUT NOTICE.

ZONE		REVISIONS		
REV	DESCRIPTION	DATE	APPROVED	



UNLESS OTHERWISE SPECIFIED: TOLERANCES		PROJECT ID	
DECIMAL	~20 ±0.1mm OVER 20~60 ±0.15mm OVER 60~ ±0.2mm	ANGULAR	±0°50'
MATERIAL		FILE	DATE
SURFACE		DRAWN	
FINISH		CHECK	
		APPROVED	

PROJECT ID 2013-96C5E	
FILE	DATE
DRAWN	
CHECK	
APPROVED	

TITLE 96-PORT CAT5e PATCH PANEL T568A OR B WIRING			
SIZE	DRAWING NUMBER	PART NUMBER	REV
SCALE	UNIT	SHEET	