

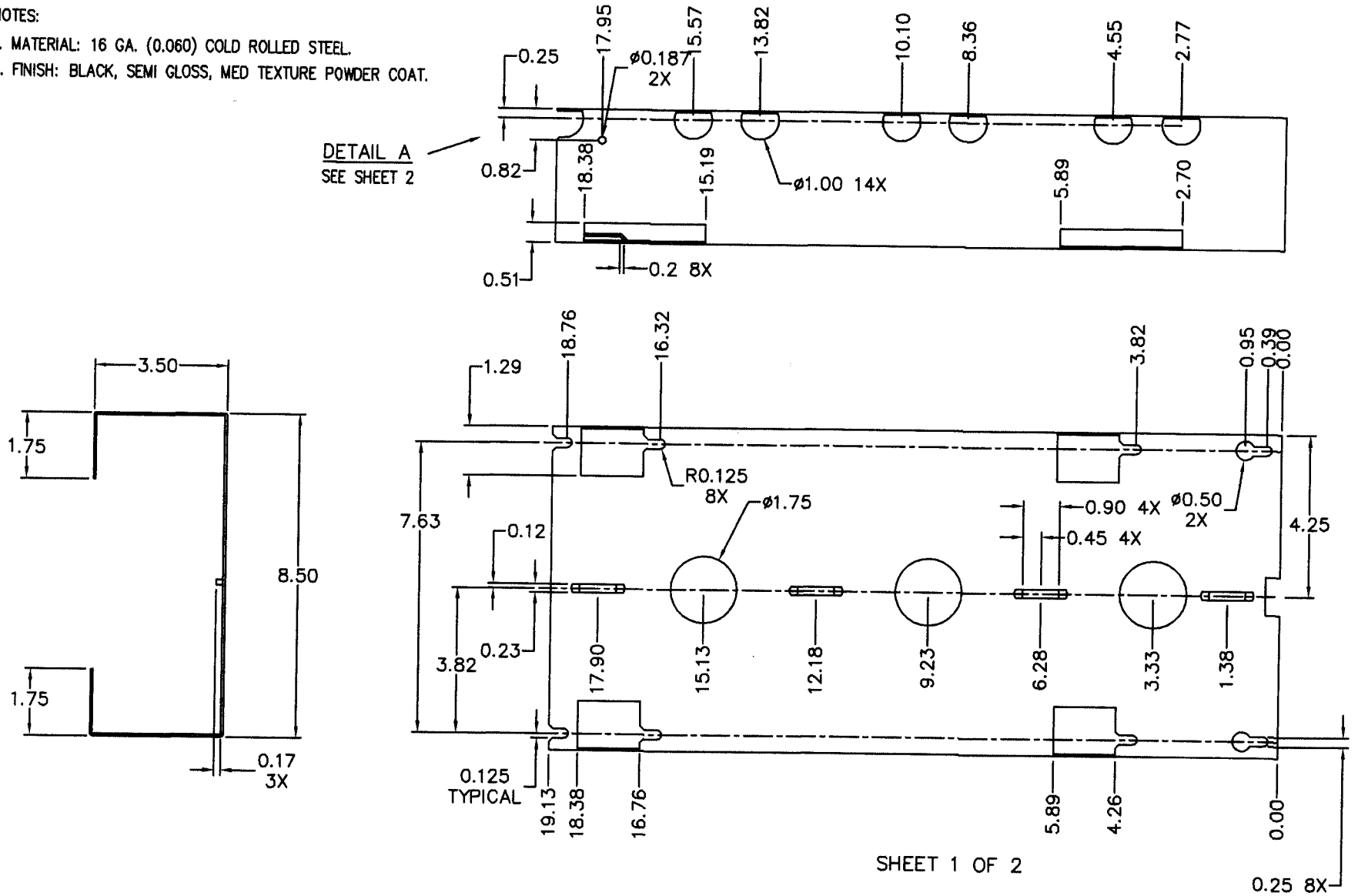
THE INFORMATION CONTAINED HEREON IS PROPRIETARY AND CONFIDENTIAL TO DYNACOM CORPORATION. AND SHALL NOT BE USED OR DISCLOSED, IN WHOLE OR IN PART WITHOUT FIRST OBTAINING THE WRITTEN PERMISSION OF DYNACOM CORPORATION.

ZONE	REV.	DESCRIPTION	DATE	APPV.
-	A	INITIAL RELEASE	03/12/02	E.A.

NOTES:

1. MATERIAL: 16 GA. (0.060) COLD ROLLED STEEL.
2. FINISH: BLACK, SEMI GLOSS, MED TEXTURE POWDER COAT.

DETAIL A
SEE SHEET 2



SHEET 1 OF 2



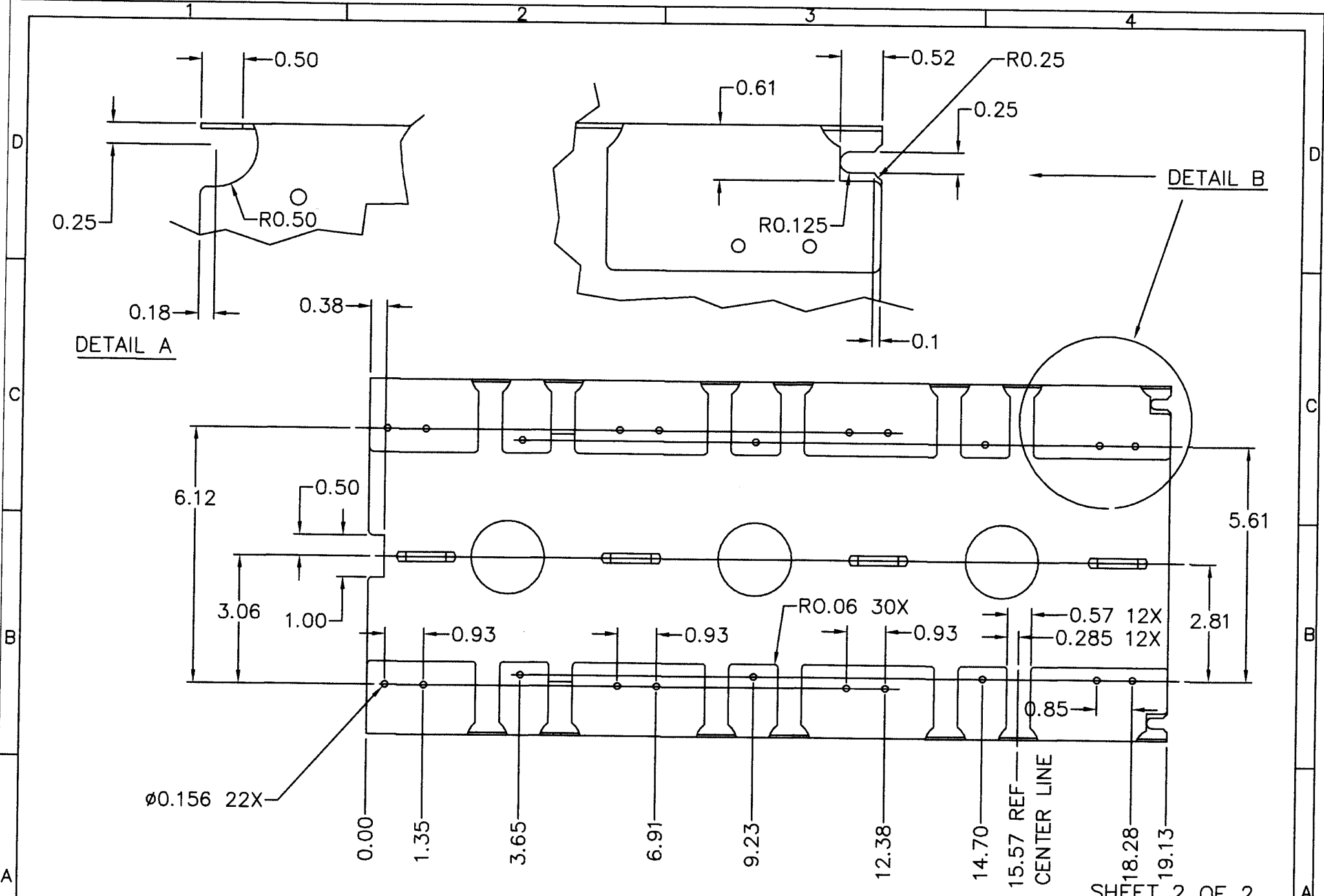
e-mail.....sales@dynamcomcorp.com

www.dynamcomcorp.com

TOLS. .X=+/- 0.030, .XX=+/- 0.010, .XXX=+/- .005, ANGLES=+/-0.5 DEG.

NEXT ASSY: - DRAWN: E.A. 03/12/02 CHECKED: Joe Tornello

TITLE: 300 Pair Verticle Wire Manager w/Trough DWG. NO. 110VWM-300 REV. A



SHEET 2 OF 2



e-mail.....sales@dynacomcorp.com
www.dynacomcorp.com

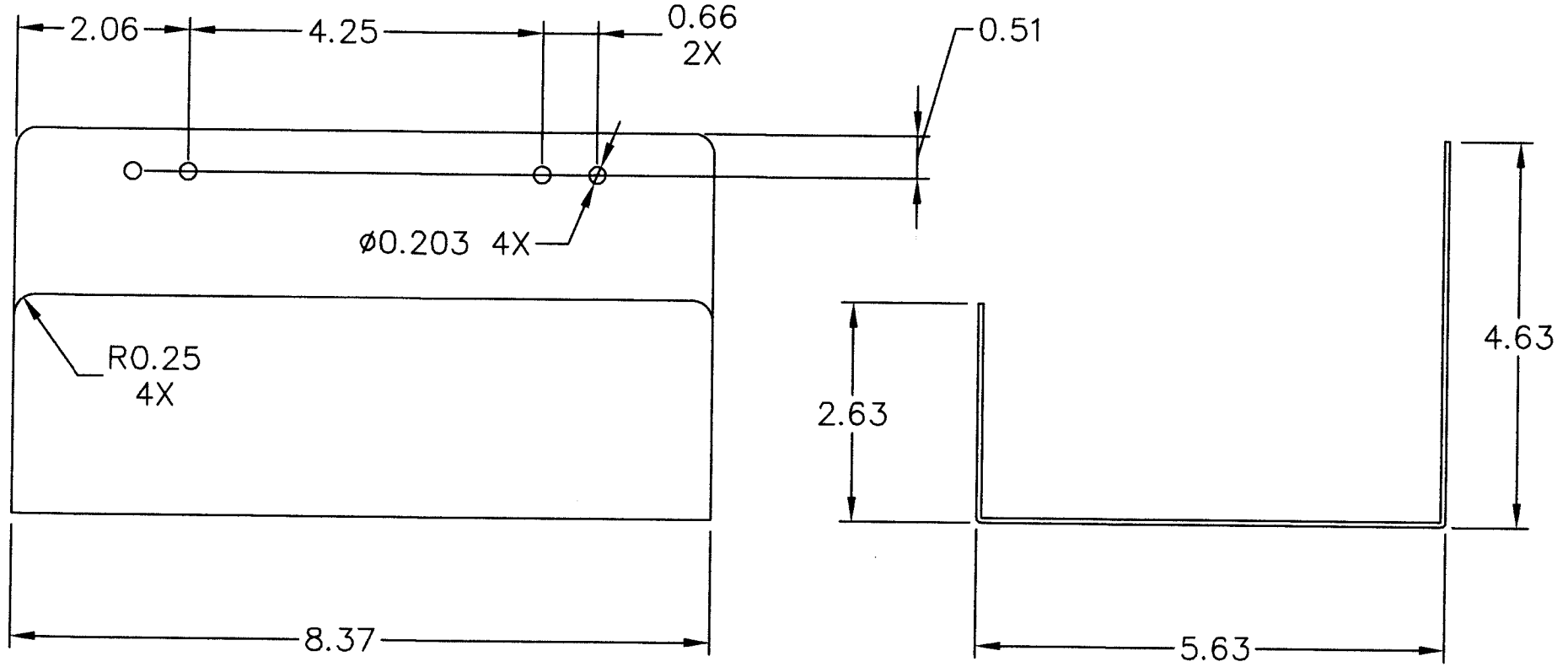
TOLS. .X=+/- 0.030, .XX=+/- 0.010, .XXX=+/- .005, ANGLES=+/-0.5 DEG.			
NEXT ASSY: -	DRAWN: E.A. 03/12/02	CHECKED: Joe Tornello	
TITLE: 300 Pair Verticle Wire Manager w/Trough		DWG. NO. 110VWM-300	REV. A

THE INFORMATION CONTAINED HEREON IS PROPRIETARY AND CONFIDENTIAL TO SOLONICS, INC. AND SHALL NOT BE USED OR DISCLOSED, IN WHOLE OR IN PART WITHOUT FIRST OBTAINING THE WRITTEN PERMISSION OF SOLONICS, INC.

ZONE		REV.	DESCRIPTION	DATE	APPV.
-	A		INITIAL RELEASE	10/03/00	E.A.

NOTES:

1. MATERIAL: 16 GA (0.060 IN) COLD ROLLED STEEL.
2. FINISH: POWDER COAT BLACK-TEXTURED.



e-mail.....sales@dynamcomcorp.com
 website.....www.dynamcomcorp.com

TOLS. .X=+/- 0.030, .XX=+/- 0.010, .XXX=+/- .005, ANGLES=+/-0.5 DEG.			
NEXT ASSY: -	DRAWN: E.A. 10/03/00	CHECKED: Eddy Lee	
TITLE: Tower Shelf		DWG. NO. T-Shelf	SHEET 1 OF 1 REV. A