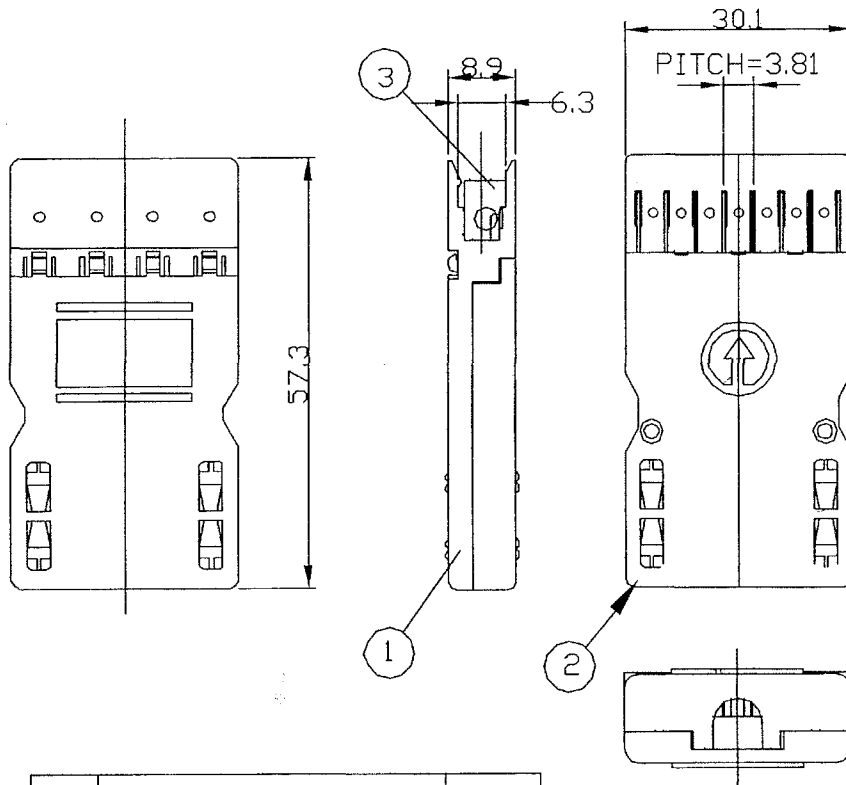


THE INFORMATION CONTAINED HEREON IS PROPRIETARY AND CONFIDENTIAL TO DYNACOM CORPORATION. AND SHALL NOT BE USED OR DISCLOSED, IN WHOLE OR IN PART WITHOUT FIRST OBTAINING THE WRITTEN PERMISSION OF DYNACOM CORPORATION. SPECIFICATIONS SUBJECT TO CHANGE WITHOUT NOTICE.

ZONE	REV	DESCRIPTION	DATE	APPV.
-	A	INITIAL RELEASE	06/18/2009	E.A.



Transmission Data

Return Loss
 From 1 to 20 MHz ≥ 35 dB
 From 20 to 100 MHz ≥ 20 dB

Electrical Data

Dielectric Strength 1.0KV AC RMS 60 Hz
 Insulation Resistance $\geq 100M\Omega$
 Contact Resistance $\leq 20m\Omega$

Environmental Conditions

Temperature Range -10 to +60°C

Materials

Plastic components:
 Polycarbonate, Flame-retardant,
 UL94V-0 rated
 Contact material: Phosphor Bronze
 Contact plating: Flasher with hard
 gold over 100 μ inches of Nickel

3	IDC TERMINAL	P.B.
2	IDC JUMPER COVER	PC
1	IDC JUMPER BASE	PC
NO	PARTS NAME	MAT'L

ALL DIMENSIONS ARE IN MILLIMETERS.



email....sales@dynacomcorp.com

web....www.dynacomcorp.com

NEXT ASSY: - DRAWN: E.A. 06/18/2009 CHECKED: -

TITLE: Patch Cord Connector,
 110-Style, 4-Pair, Cat5E

110PCC-4

REV.
 A