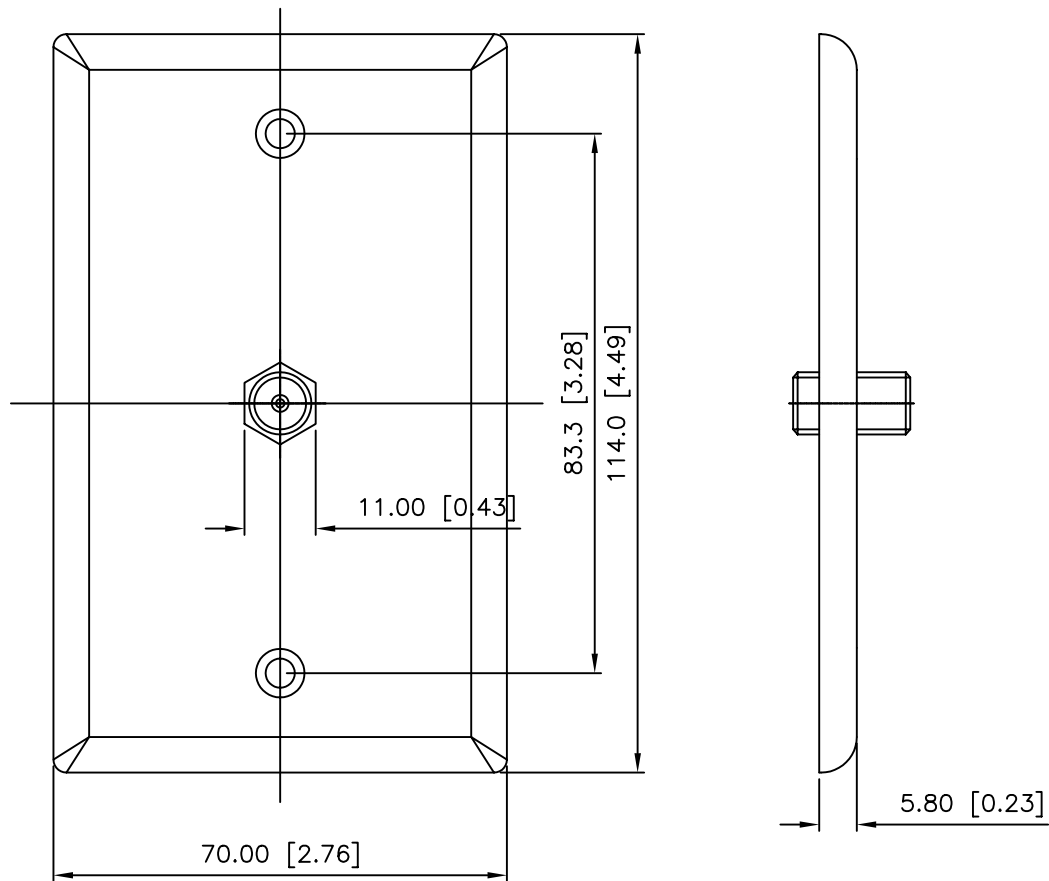


THE INFORMATION CONTAINED HEREON IS PROPRIETARY AND CONFIDENTIAL TO DYNACOM CORPORATION. AND SHALL NOT BE USED OR DISCLOSED, IN WHOLE OR IN PART WITHOUT FIRST OBTAINING THE WRITTEN PERMISSION OF DYNACOM CORPORATION. SPECIFICATIONS SUBJECT TO CHANGE WITHOUT NOTICE.

ZONE	REV	DESCRIPTION	DATE	APPV.
-	A	INITIAL RELEASE	05/20/09	E.A.

NOTES:

1. MAT'L-ABS 94V0.
2. PART TO BE FREE OF BURRS, SCRATCHES, SPOTS OR OTHER IMPERFECTIONS.
3. PIN MARK DEPRESSION 0.3mm MAX.
4. GENERAL TOLS: ±0.2 mm.
5. SUPPLIED WITH 2 MOUNTING SCREWS.



email....sales@dynamcomcorp.com  
 web....www.dynamcomcorp.com

ALL DIMENSIONS ARE IN INCHES			
NEXT ASSY: -	DRAWN: E.A. 05/20/09	CHECKED: -	
TITLE: Wall Plate, w/1G F Coupler		10630-FS-XX	REV. A