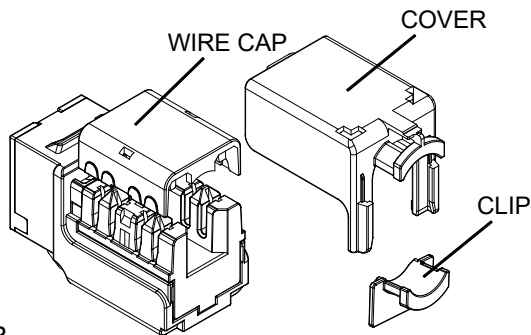
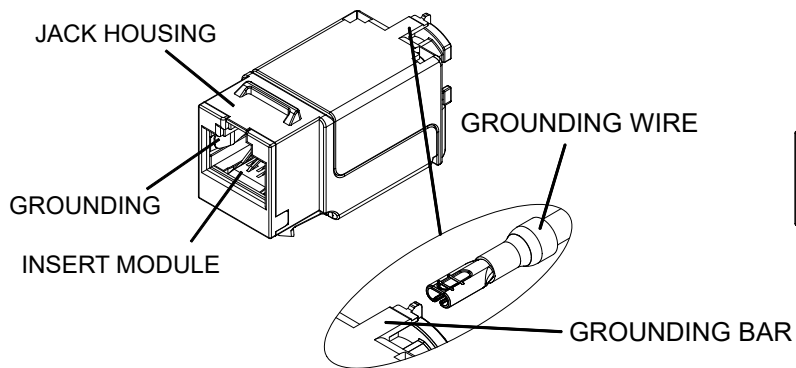
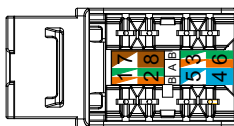
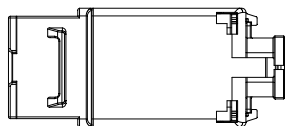


THE INFORMATION CONTAINED HEREON IS PROPRIETARY AND CONFIDENTIAL TO DYNACOM CORPORATION. AND SHALL NOT BE USED OR DISCLOSED, IN WHOLE OR IN PART WITHOUT FIRST OBTAINING THE WRITTEN PERMISSION OF DYNACOM CORPORATION. SPECIFICATIONS SUBJECT TO CHANGE WITHOUT NOTICE.

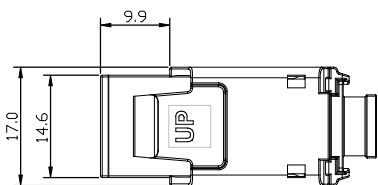
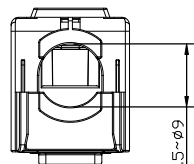
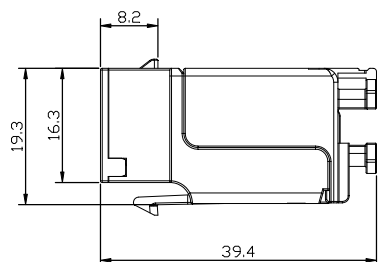
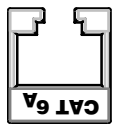
ZONE	REV.	DESCRIPTION	DATE	APPV.
-	A	INITIAL RELEASE	12/15/2022	E.A.
-	B			
-	C			
-	D			



BLUE: 10606ASH-BL
 RED: 10606ASH-RD
 YELLOW: 10606ASH-YL



COLOR BAZEL



TRANSMISSION PERFORMANCE
 Meet all requirements specified in connecting hardware requirement of:
 ISO/IEC 11801-1, Category 6A
 IEC 60603-7-51
 ANSI/TIA-568-C.2, Category 6A
 IEEE 802.3bt PoE: Type 4

COMPONENTS

ITEM	PART NAME	Q'TY
1	JACK HOUSING	1
2	INSERT MODULE	1
3	GROUNDING	1
4	IDC MODULE	1
5	WIRE CAP	1
6	COVER	1
7	CLIP	1
8	CABLE TIE(ACCS.)	1

ELECTRICAL
 Electrical Insulation Resistance : 500 MΩ min. @ 100V d.c
 Dielectric Withstanding Voltage : 1000V d.c. or a.c. Peak Contact to Contact @ 60Hz for 1 minute, 1500V d.c. or a.c. Peak Contact to Panel @ 60Hz for 1 minute

MECHANICAL
 Insertion / Extraction Life : 750 Cycles Minimum
 Re-usable IDC's can be terminated 20 times with wires from AWG 26 through AWG 22.

PHYSICAL
 Housing : Zinc-alloy fully shielded
 Spring Wire : Phosphor Bronze Alloy Plated With 50 micro-inch of Gold
 IDC : Phosphor Bronze Alloy With 100 micro-inch 100% Sn Alloy



e-mail...sales@dynacomcorp.com
 www.dynacomcorp.com

DIMENSIONS: MM

NEXT ASSY: -	DRAWN: E.A.	CHECKED: A.L.
TITLE JACK MOD CAT6A HD SHIELDED, COLOR	DWG. NO. 10606ASH-XX	SHEET 1 OF 1 REV. A