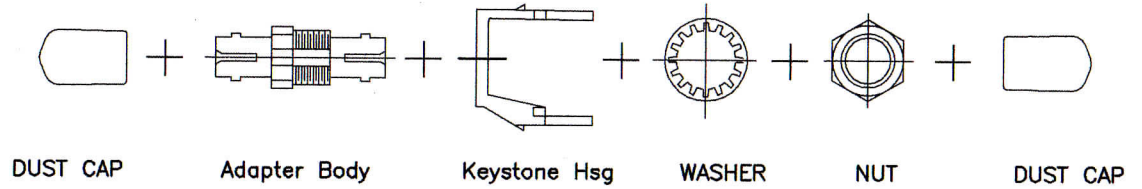


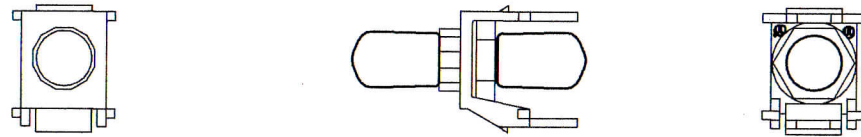
THE INFORMATION CONTAINED HEREON IS PROPRIETARY AND CONFIDENTIAL TO DYNACOM CORPORATION. AND SHALL NOT BE USED OR DISCLOSED, IN WHOLE OR IN PART WITHOUT FIRST OBTAINING THE WRITTEN PERMISSION OF DYNACOM CORPORATION.

ZONE	REV	DESCRIPTION	DATE	APPV.
-	A	INITIAL RELEASE	12/12/2012	E.A.



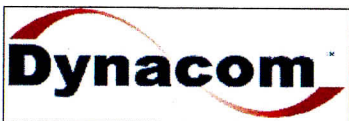
**PERFORMANCE SPECIFICATION**

INSERTION LOSS (dB) TYP/MAX	0.15 / 0.3
$\Delta$ IL (dB) 500 MATINGS	0.1
TEMP RANGE (°C)	-40 TO +85
ALIGNMENT SLEEVE RETENTION FORCE (gf)	300 ~ 600



**DESCRIPTION DATA**

Part Number	10600-ST-SM-XX
Style	ST Simplex-Single Mode (SM)
Keystone Housing	Material: Plastic, ABS UL94V-0. Color: White or Ivory
Adapter Body	Zinc Alloy Die Casting, Nickel Plated
Alignment Sleeve	Zirconia (Ceramic)
Dust Cap	Material: Plastic, ABS UL94V-0, Color-Red
Washer	Steel, Nickel Plated
Nut	Brass, Nickel Plated



e-mail.....sales@dynacomcorp.com

web .....www.dynacomcorp.com

TOLS:

NEXT ASSY: -

DRAWN: E.A. 12/12/2012

CHECKED: -

TITLE:

ST Simplex Coupler Module, Single Mode

DWG. NO.

10600-ST-SM-XX

REV.

A