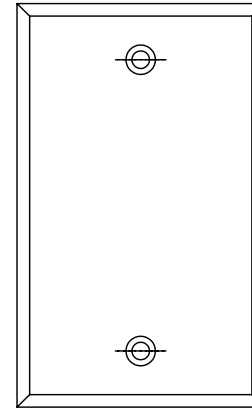
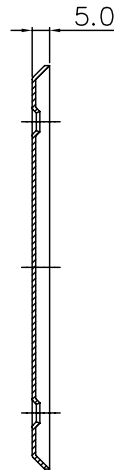
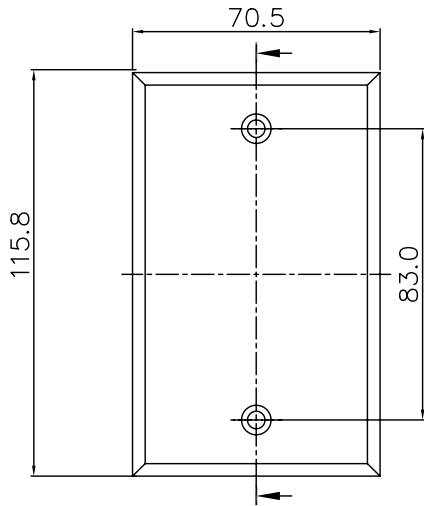


THE INFORMATION CONTAINED HEREON IS PROPRIETARY AND CONFIDENTIAL TO DYNACOM CORPORATION, AND SHALL NOT BE USED OR DISCLOSED, IN WHOLE OR IN PART, WITHOUT FIRST OBTAINING THE WRITTEN PERMISSION FROM DYNACOM CORPORATION.

ZONE	REV	DESCRIPTION	DATE	APPV.
-	A	RELEASED.	09/16/2008	E.A.



e-mail.....sales@dynacomcorp.com

31082 San Antonio Street  
Hayward, California 94544

Dimensions: mm - DO NOT SCALE DRAWING

NEXT ASSY-

DRAWN: E.A.

CHECKED: E.A.

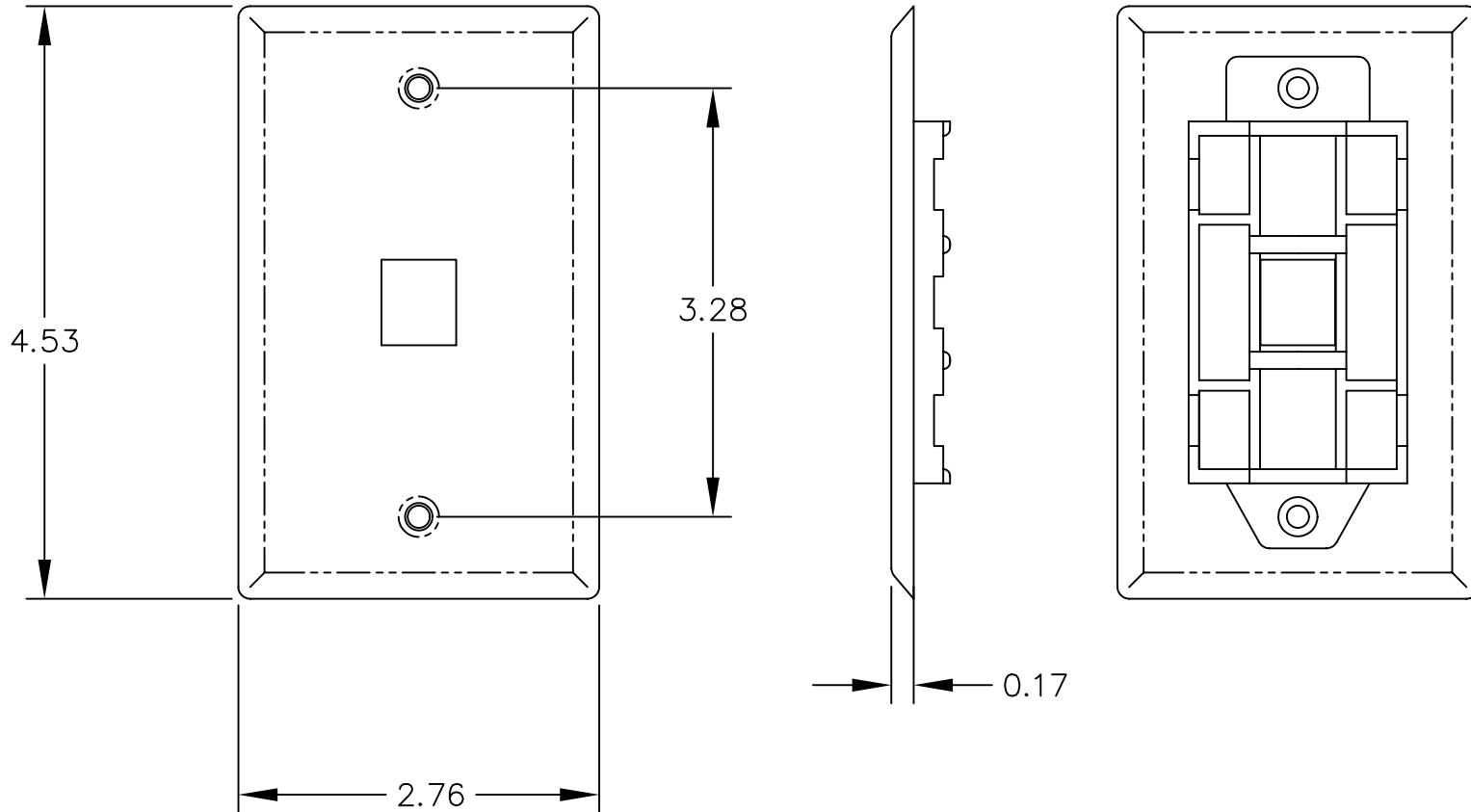
TITLE: **Wallplate, Blank  
Single-Gang, Stainless Steel**

DWG. NO. SHEET 1 OF 1  
**10600-PB-SS**

REV.  
A

THE INFORMATION CONTAINED HEREON IS PROPRIETARY AND CONFIDENTIAL TO DYNACOM CORPORATION AND SHALL NOT BE USED OR DISCLOSED, IN WHOLE OR IN PART WITHOUT FIRST OBTAINING THE WRITTEN PERMISSION OF DYNACOM CORPORATION. SPECIFICATIONS ARE SUBJECT TO CHANGE WITHOUT NOTICE.

- 1. 1-PKG OF 2 SCREWS, 6-32 TYPE F, OVAL PHILLIPS COMBO HEAD X 0.9 LONG. NICKEL PLATED
- 2. 0.8 mm STAINLESS STEEL



e-mail.....info@dynacomcorp.com

1366 San Mateo Ave Suite 201  
 South San Francisco CA 94080

All Dimensions Are In Milimeters (mm)

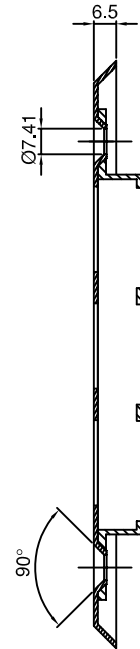
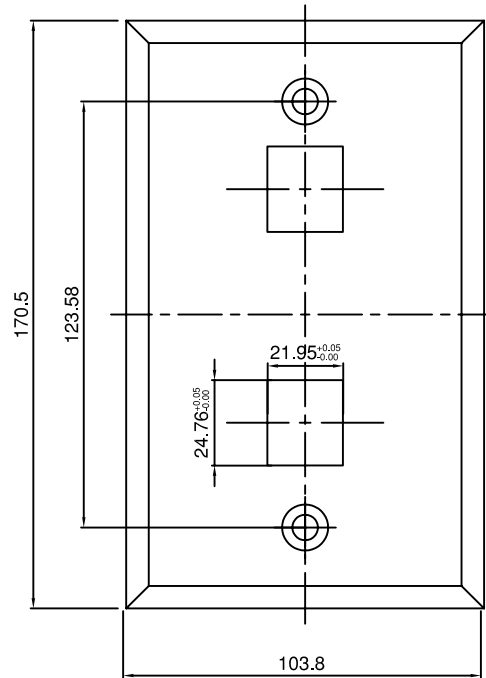
TITLE: 1 Port Stainless Steel Wallplate

10600-P1-SS

REV.

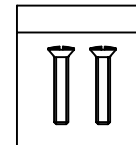
4 3 2 1

**THE INFORMATION CONTAINED HEREON IS PROPRIETARY AND CONFIDENTIAL TO DYNACOM CORPORATION AND SHALL NOT BE USED OR DISCLOSED, IN WHOLE OR IN PART WITHOUT FIRST OBTAINING THE WRITTEN PERMISSION OF DYNACOM CORPORATION. SPECIFICATIONS ARE SUBJECT TO CHANGE WITHOUT NOTICE.**



SECTION A-A

PACKAGE KIT:



SCREW (2X)  
 (#6-32)

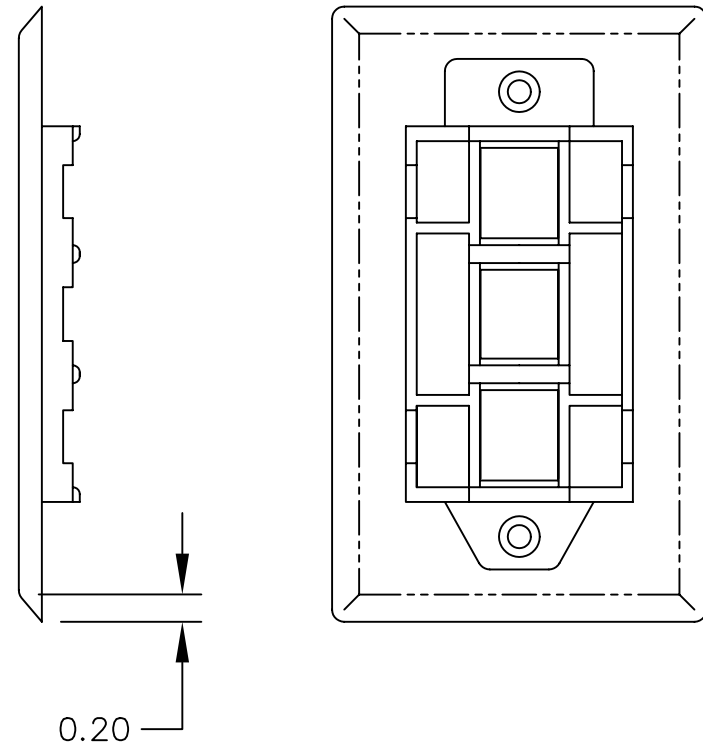
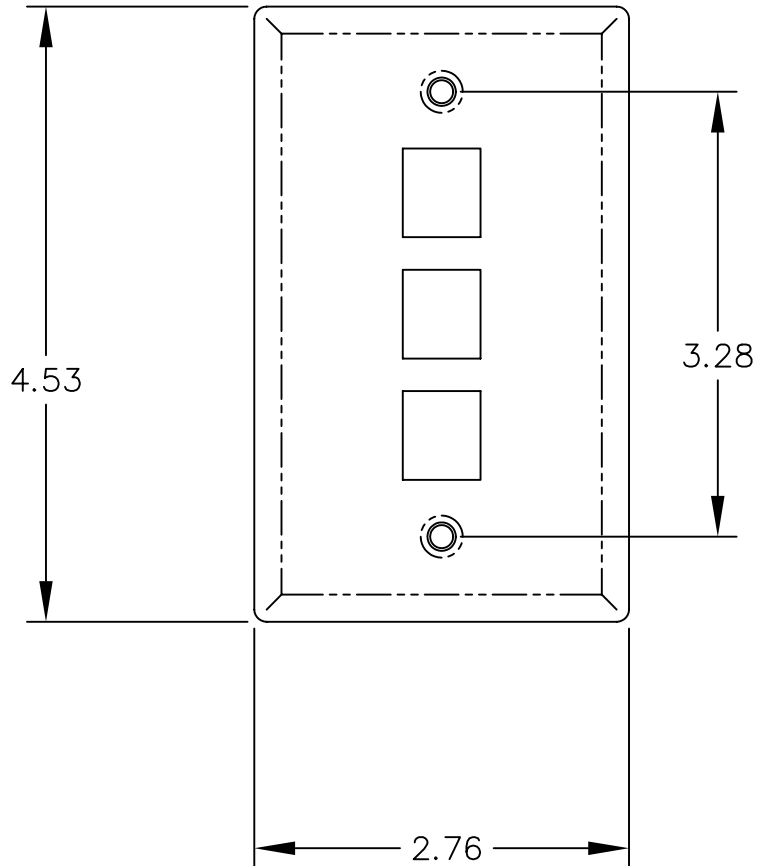
NOTES:

- 1.MATERIAL: FACEPLATE: 0.8mm STAINLESS STEEL(SUS 304)  
 JACK SHELF: ABS 94V-0
- 2.BURRS DO NOT EXCEED 0.10 mm
- 3.PART TO BE FREE OF DEFORMATION

UNLESS OTHERWISE SPECIFIED: TOLERANCES		PROJECT ID 10600-P2-SS		TITLE 2-PORT STAINLESS STEEL WALLPLATE	
DECIMAL	~20 ±0.1mm	ANGULAR	±0°50'	FILE	DATE
OVER 20-60	±0.15mm				
OVER 60~	±0.2mm				
MATERIAL		DRAWN			
SURFACE		CHECK			
FINISH		APPROVED			
SCALE	UNIT	mm	SHEET		

THE INFORMATION CONTAINED HEREON IS PROPRIETARY AND CONFIDENTIAL TO DYNACOM CORPORATION AND SHALL NOT BE USED OR DISCLOSED, IN WHOLE OR IN PART WITHOUT FIRST OBTAINING THE WRITTEN PERMISSION OF DYNACOM CORPORATION. SPECIFICATIONS ARE SUBJECT TO CHANGE WITHOUT NOTICE.

- 1. 1-PKG OF 2 SCREWS, 6-32 TYPE F, OVAL PHILLIPS COMBO HEAD X 0.9 LONG. NICKEL PLATED
- 2. 0.8 mm STAINLESS STEEL



e-mail.....info@dynacomcorp.com  
 1366 San Mateo Ave Suite 201  
 South San Francisco CA 94080

All Dimensions Are In Inches (in)

TITLE: 3 Port Stainless Steel Wallplate

10600-P3-SS

REV.

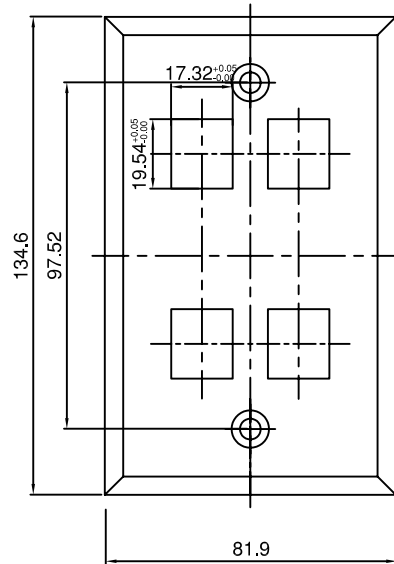
THE INFORMATION CONTAINED HEREON IS PROPRIETARY AND CONFIDENTIAL TO DYNACOM CORPORATION AND SHALL NOT BE USED OR DISCLOSED, IN WHOLE OR IN PART WITHOUT FIRST OBTAINING THE WRITTEN PERMISSION OF DYNACOM CORPORATION.  
 SPECIFICATIONS ARE SUBJECT TO CHANGE WITHOUT NOTICE.

D

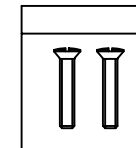
C

B

A



PACKAGE KIT:



SCREW (2X)  
 (#6-32)

NOTES:

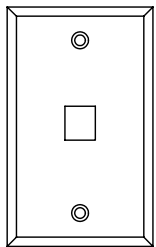
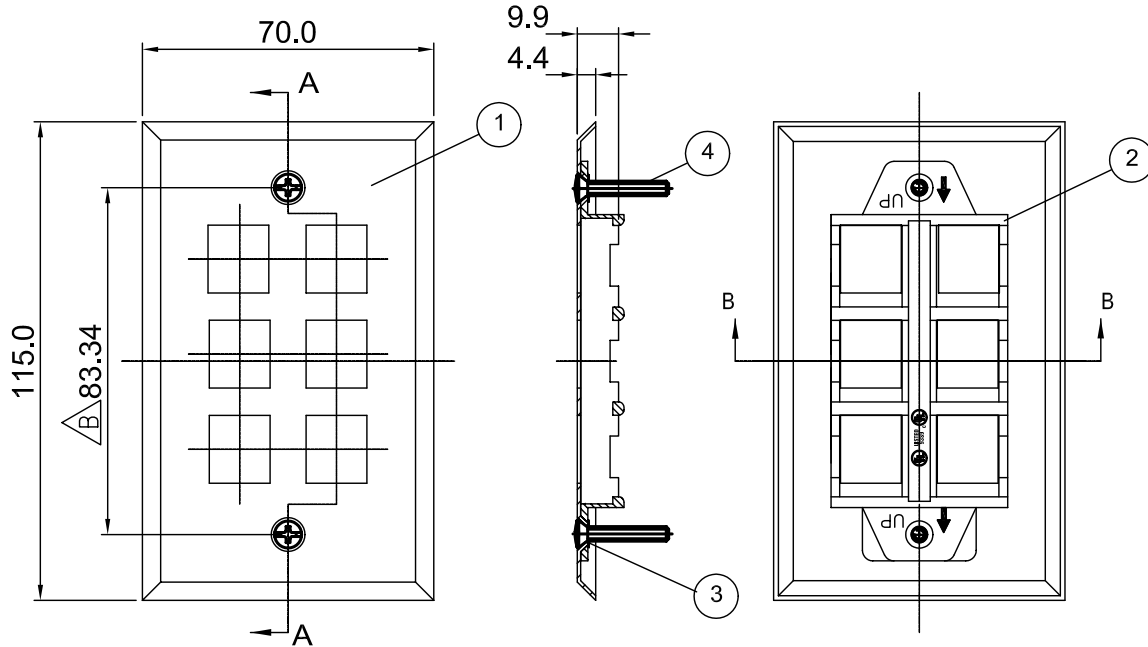
- 1.MATERIAL: FACEPLATE: 0.8mm STAINLESS STEEL(SUS 304)  
 JACK SHELF: ABS 94V-0
- 2.BURRS DO NOT EXCEED 0.10 mm

UNLESS OTHERWISE SPECIFIED: TOLERANCES		PROJECT ID 10600-P4-SS			
DECIMAL	~20 ±0.1mm	ANGULAR	±0°50'	FILE	DATE
OVER 20~60	±0.15mm				
OVER 60~	±0.2mm				
MATERIAL		DRAWN		TITLE 4-PORT STAINLESS STEEL WALLPLATE	
SURFACE		CHECK		SIZE	DRAWING NUMBER
FINISH		APPROVED		PART NUMBER	REV
				SCALE	UNIT
				mm	SHEET

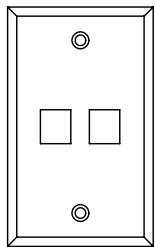
THE INFORMATION CONTAINED HEREON IS PROPRIETARY AND CONFIDENTIAL TO DYNACOM CORPORATION, AND SHALL NOT BE USED OR DISCLOSED, IN WHOLE OR IN PART, WITHOUT FIRST OBTAINING THE WRITTEN PERMISSION FROM DYNACOM CORPORATION.

ZONE	REV	DESCRIPTION	DATE	APPV.
-	A	RELEASED.	09/16/2008	E.A.

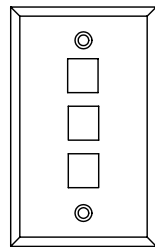
4	SCREW	2
3	RIVET	2
2	JACK SHELF	1
1	PLATE	1
NO.	PART NAME	Q'TY



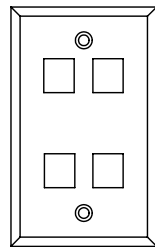
10600-P1-SS



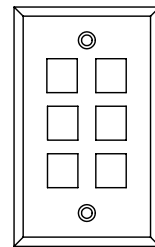
10600-P2-SS



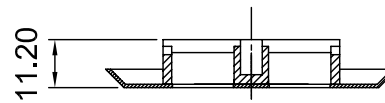
10600-P3-SS



10600-P4-SS



10600-P6-SS



1

e-mail.....sales@dynacomcorp.com

31082 San Antonio Street  
Hayward, California 94544

Dimensions: mm - DO NOT SCALE DRAWING

NEXT ASSY-

DRAWN: E.A.

CHECKED: E.A.

TITLE: **1-Port, Wallplate  
Single-Gang (Satin Finish)**

DWG. NO. SHEET 1 OF 1  
**10600-P1-SS**

REV.  
**A**

2

3

4